

MB136

MERCEDES classe G

Dal 2019 - motore 2987 cc - 6 cilindri - con A/C - con alternatore supplementare
From 2019 - engine 2987 cc - 6 cylinders - with A/C - with additional alternator

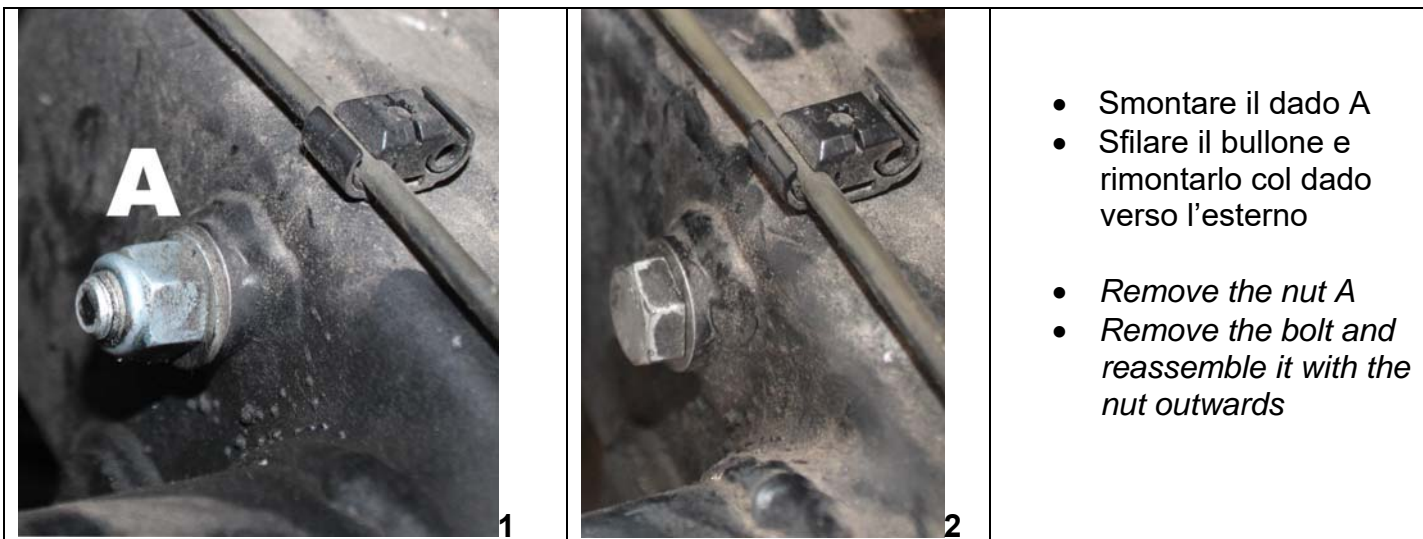
Istruzioni di montaggio innesto elettromagnetico Electromagnetic clutch kit installation instructions



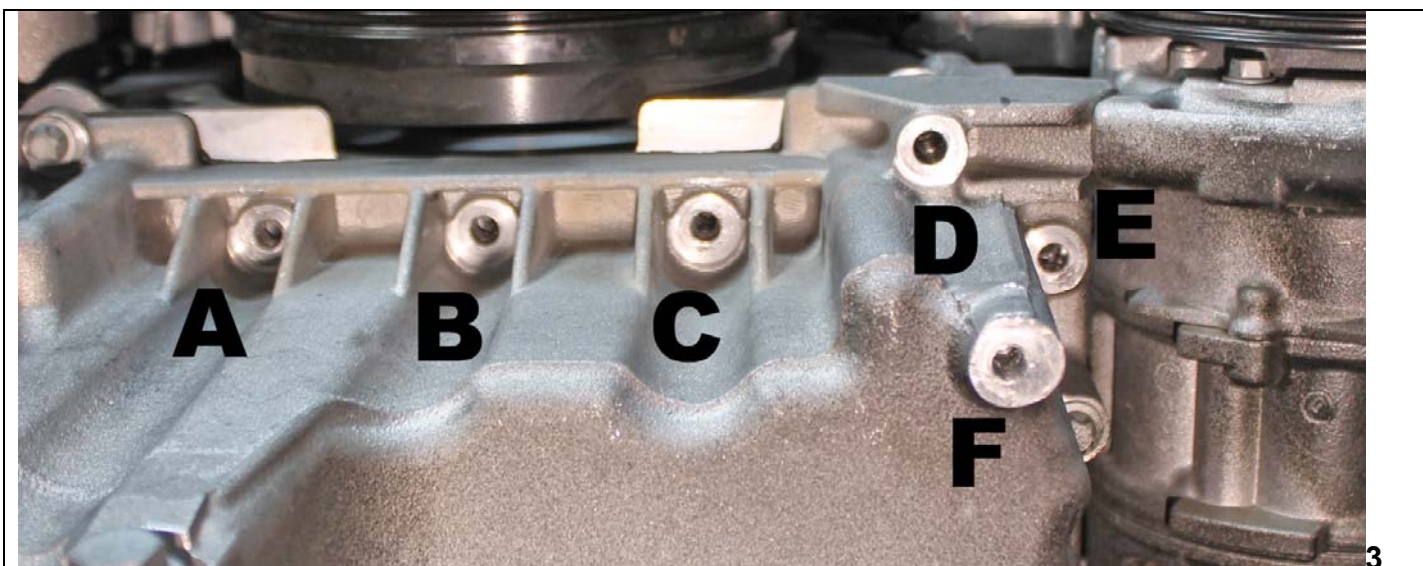
Utilizzare un adeguato ponte sollevatore per sollevare il veicolo
Use a suitable lifting bridge to lift the vehicle

<u>TABELLA GENERALE DI SERRAGGIO BULLONI (Nm)</u>							
<u>GENERAL TABLE OF TIGHTENING BOLTS (Nm)</u>							
Qualità Quality	M6	M7	M8	M10	M12	M14	M16
8,8	10,3	17,1	25,5	50	87	138	210
10,9	14,7	24,5	35,3	70	122	194	299
12,09	17,6	28,4	42,1	85	147	235	358

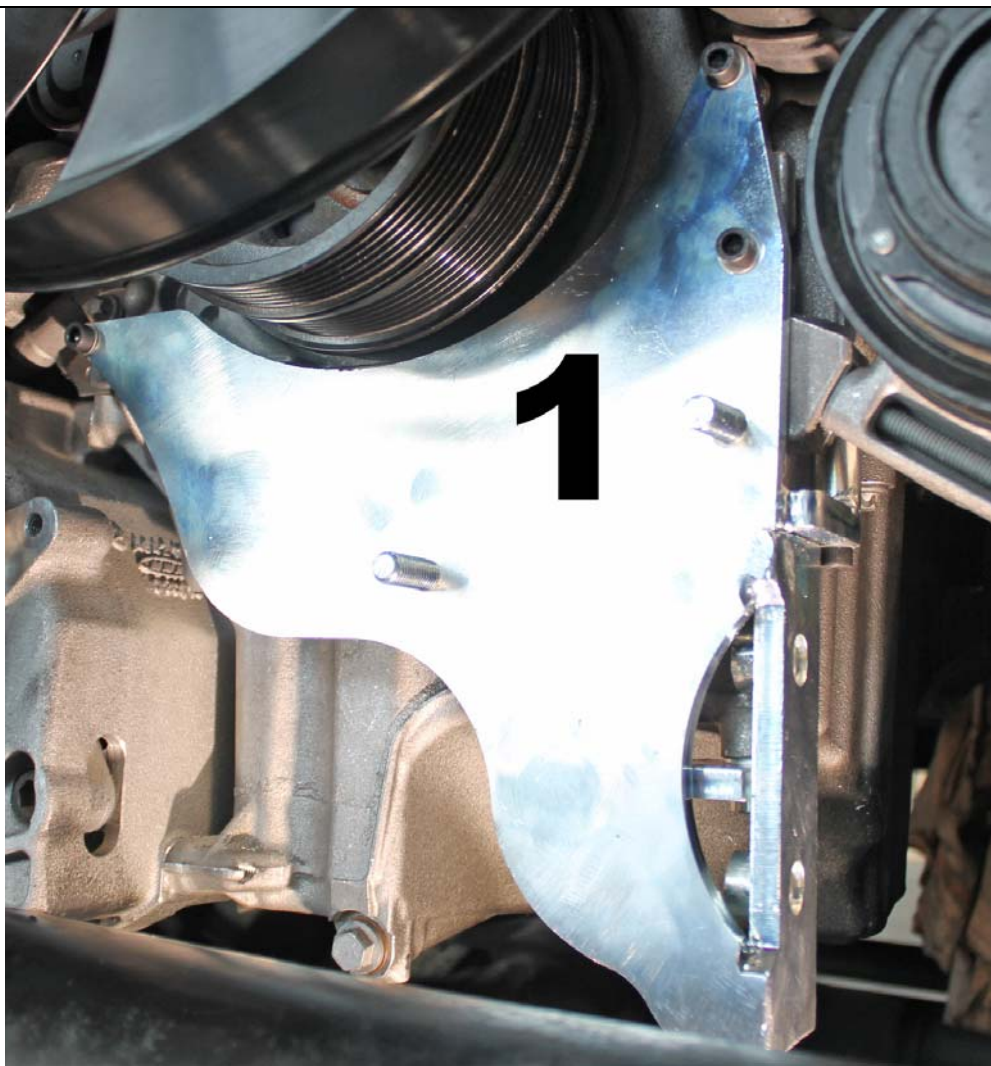
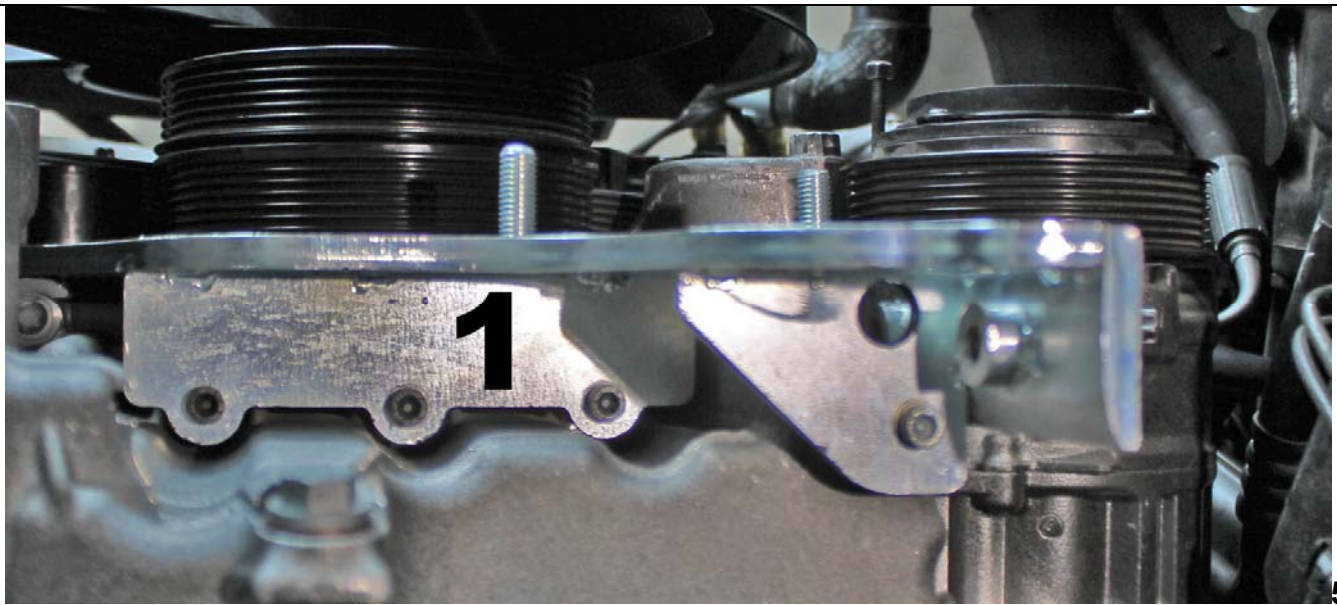
- **Smontare la cinghia dell'alternatore supplementare e la cinghia dei servizi motore**
- **Remove the additional alternator belt and the engine services belt**



- Smontare il dado A
- Sfilare il bullone e rimontarlo col dado verso l'esterno
- *Remove the nut A*
- *Remove the bolt and reassemble it with the nut outwards*



- Eliminare le viti **A B C D E F G H I**
- *Remove the screws **A B C D E F G H I***

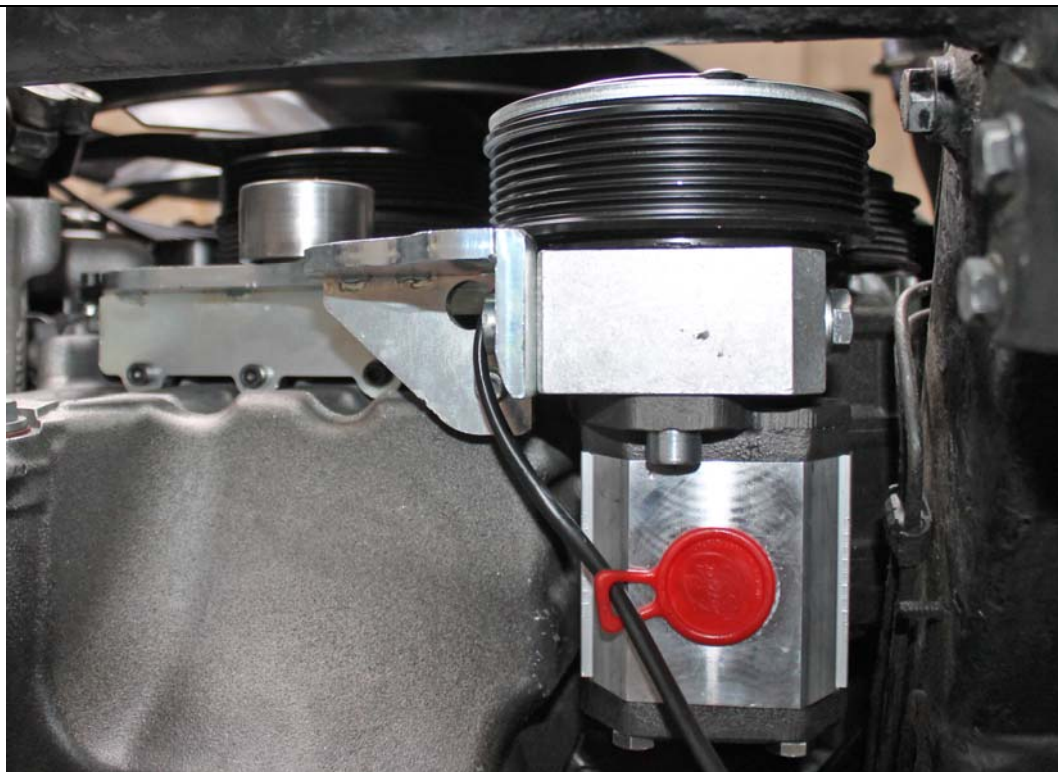


- Installare la staffa **1**
- Inserire le viti nei punti **A B C D E F G H I** , senza stringerle
- Per prime stringere le viti **A B C D E F** , poi stringere le viti **G H I**

- *Install bracket **1***
- *Insert the screws in points **A B C D E F G H I** , without tightening them*
- *First tighten the screws **A B C D E F** , then tighten the screws **G H I***

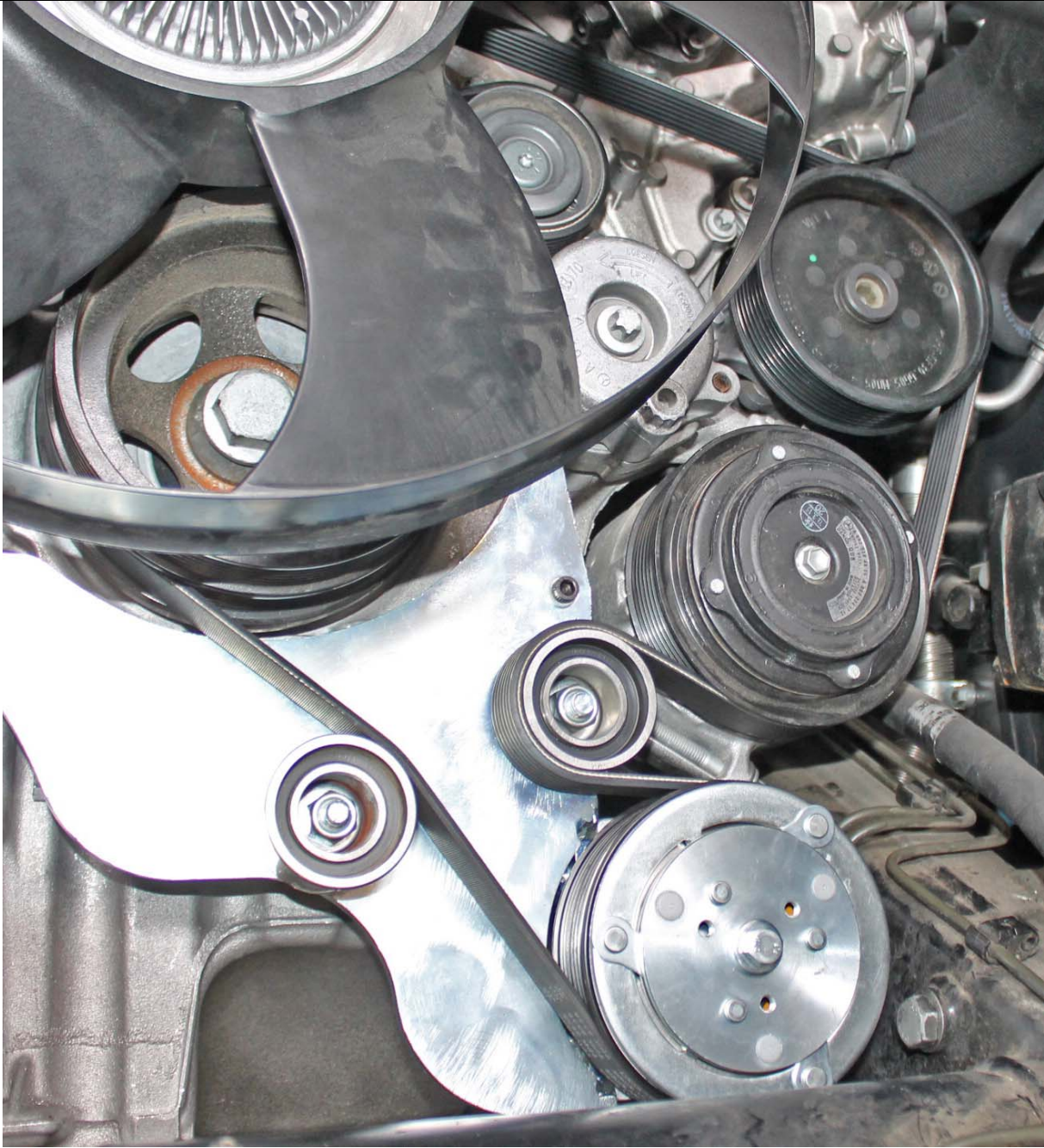


7

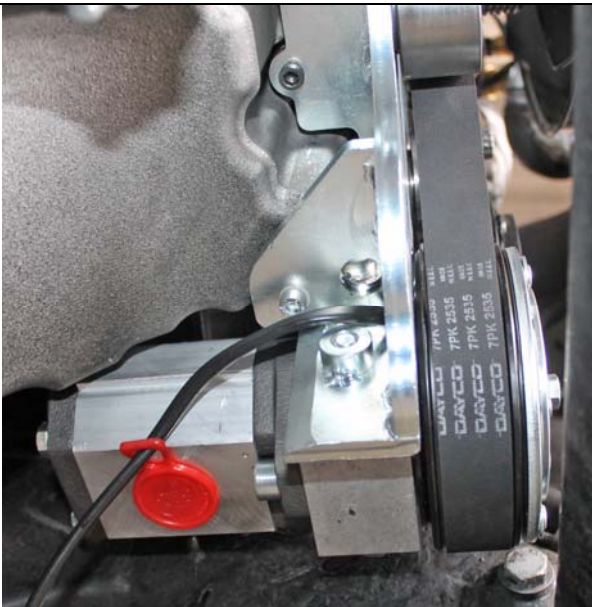


8

- Montare le pulegge di rinvio
- Montare la frizione elettromagnetica complete di pompa
- *Fit the return pulleys*
- *Fit the electromagnetic clutch complete with pump*

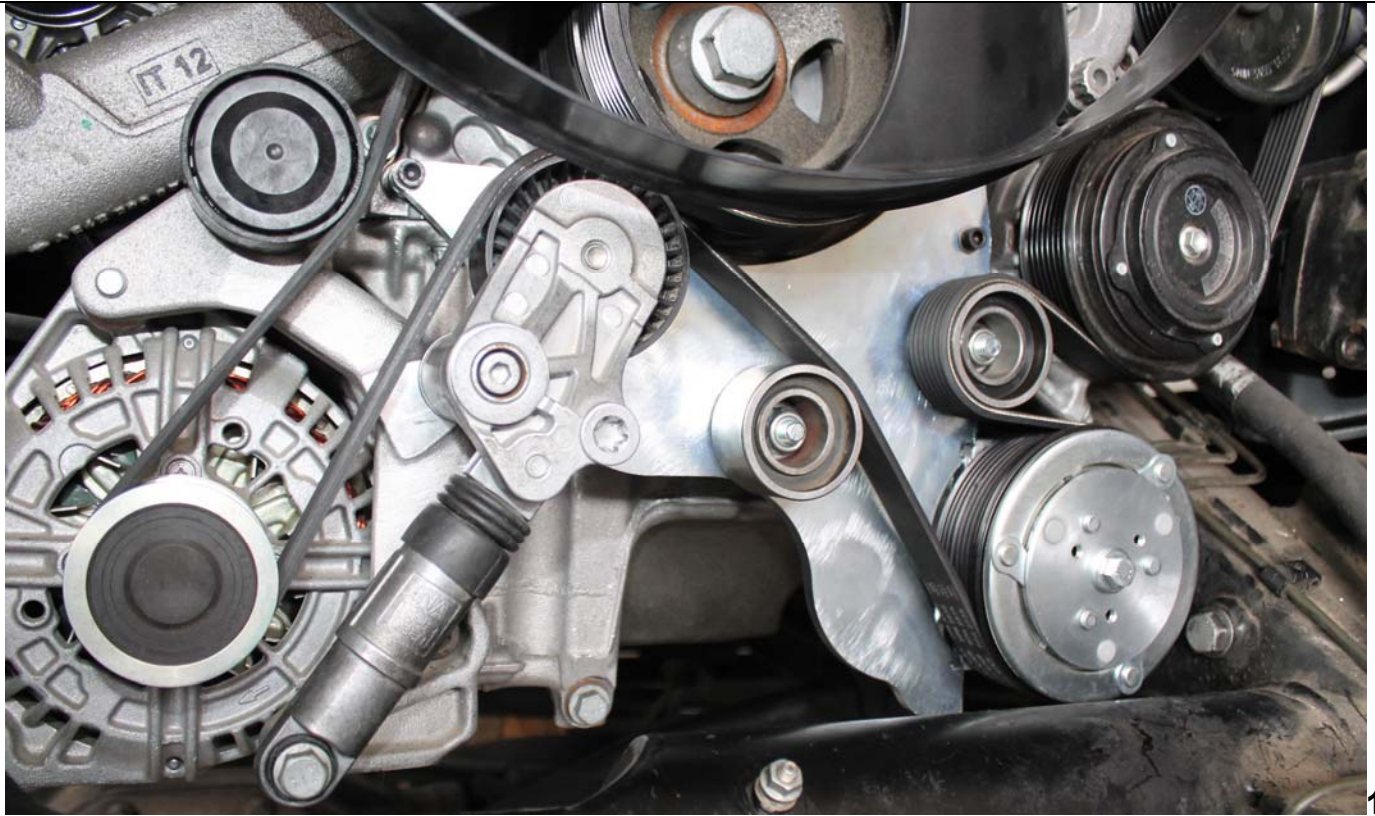


9



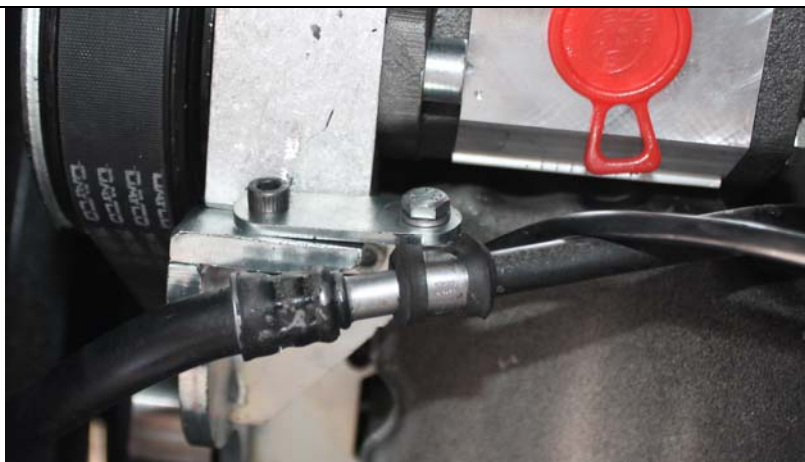
10

- Montare la cinghia
- *Fit the belt*



11

- Rimontare la cinghia dell'alternatore supplementare
- *Reassemble the additional alternator belt*



12



13

- Utilizzando le staffe e le viti fornite fissare il tubo dell'olio
- *Using the brackets and screws provided, fix the oil pipe*

- Controllare che non ci siano interferenze fra tubi, pulegge e cinghie
- Check that there is no interference between pipes, pulleys and belts